

**CHEM****BIO**CHEM

## Supporting Information

© Copyright Wiley-VCH Verlag GmbH & Co. KGaA, 69451 Weinheim, 2009

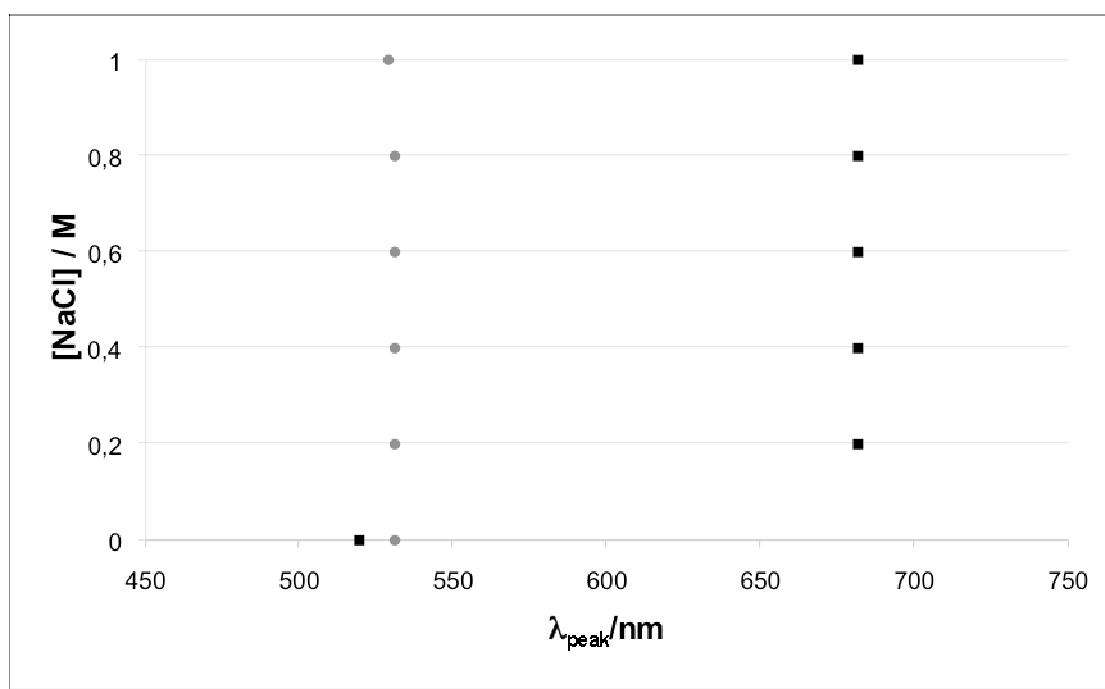
# Supporting Information

for

## Shuttling Gold Nanoparticles inside Tumoral Cells with an Amphipathic Proline-Rich Peptide

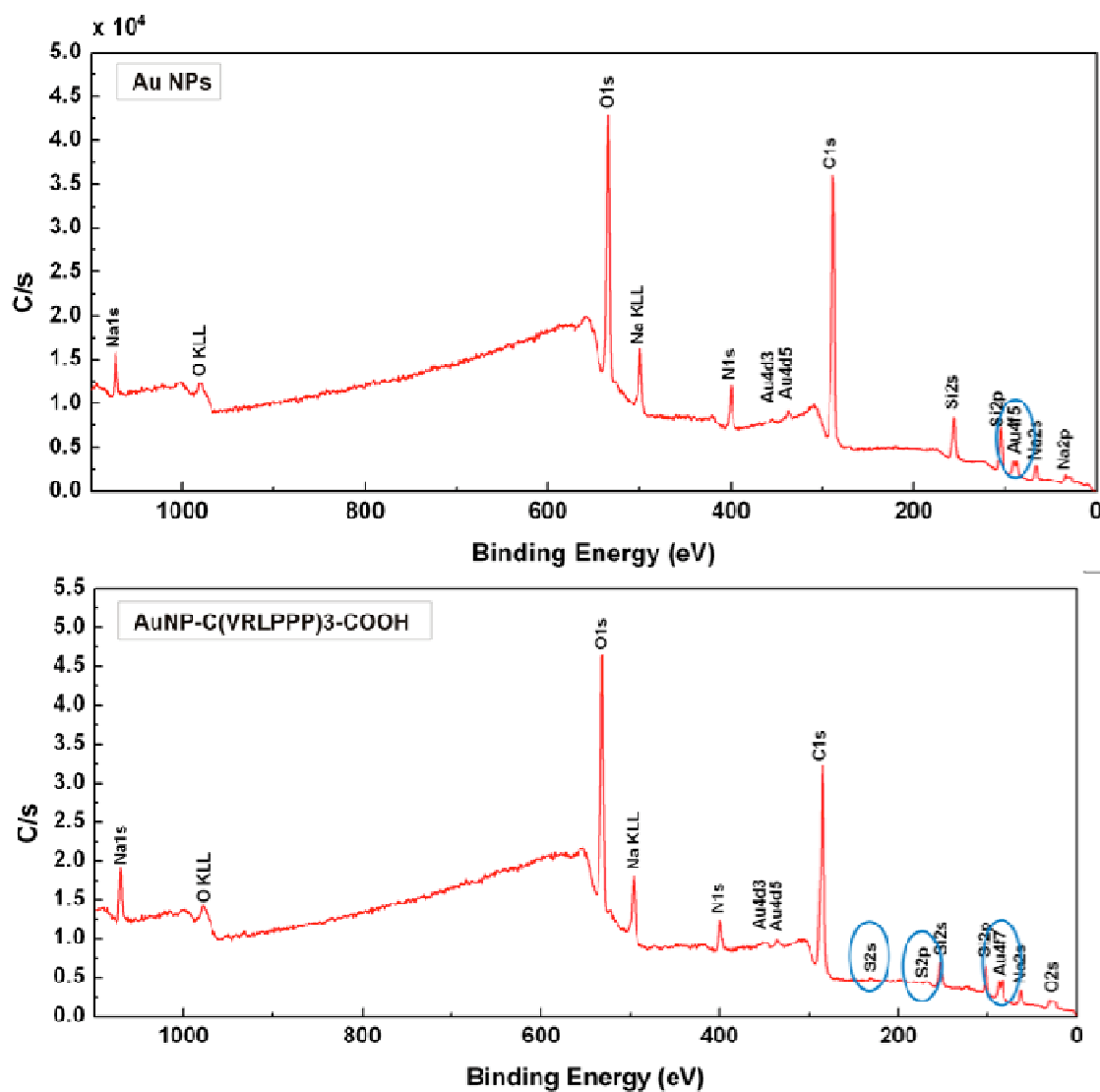
Sílvia Pujals, Neus G. Bastús, Eva Pereiro, Carmen López-Iglesias, Víctor F. Puentes, Marcelo J. Kogan, and Ernest Giralt\*

### Stability towards Ionic Strength

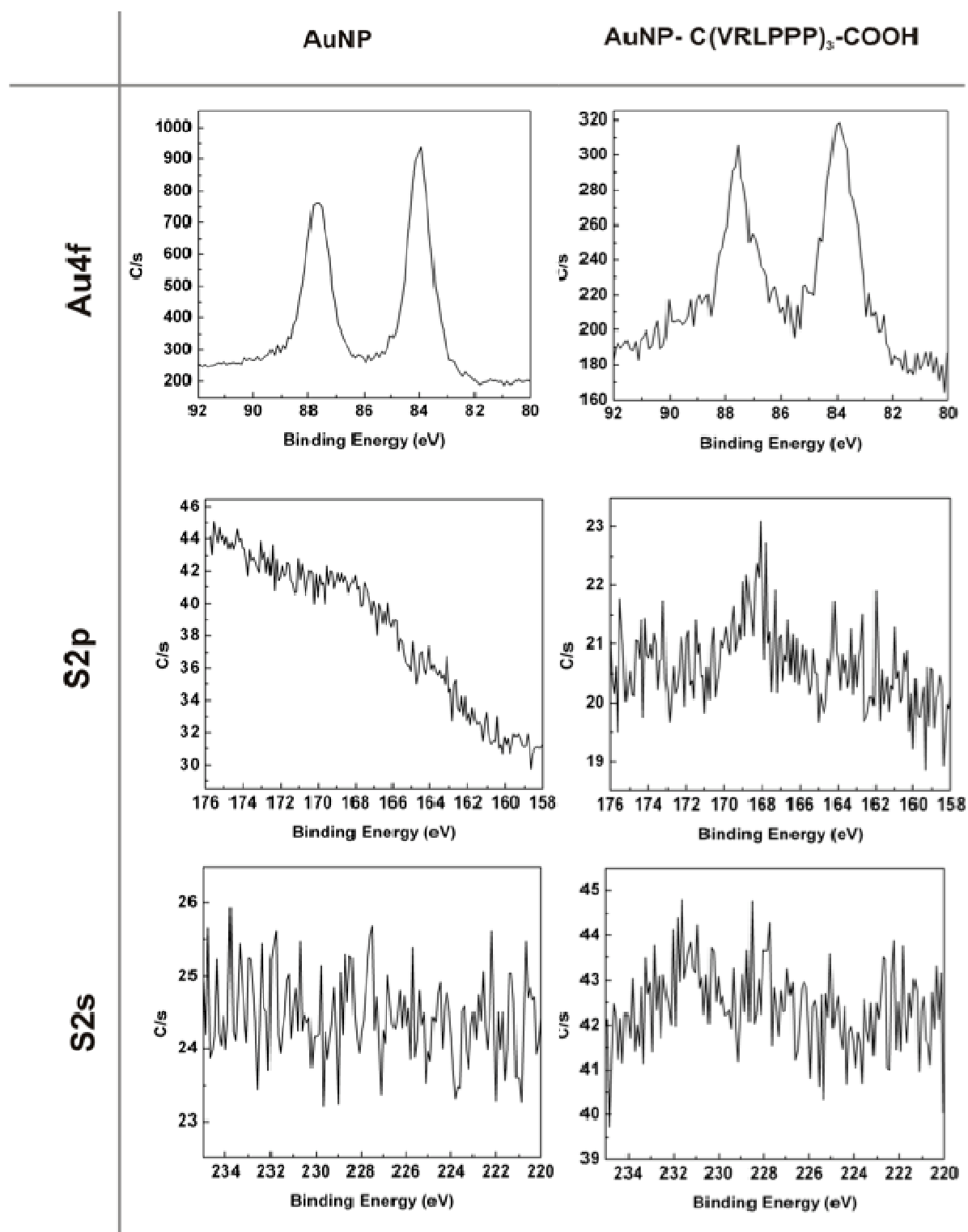


**Figure S1.** Change on the visible peak wavelength upon adding increasing concentrations of NaCl; AuNps (black squares) and AuNp-C-SAP (grey circles).

## X-ray Photoelectron Microscopy

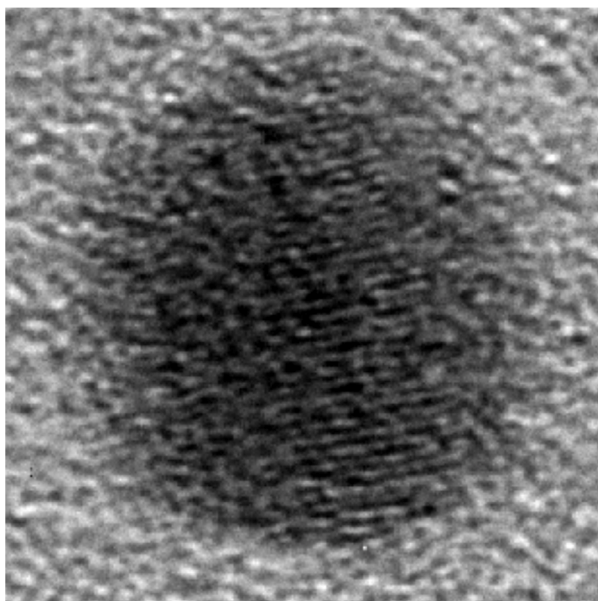


**Figure S2.** XPS spectra of AuNPs (top) and AuNP-C-SAP (bottom).



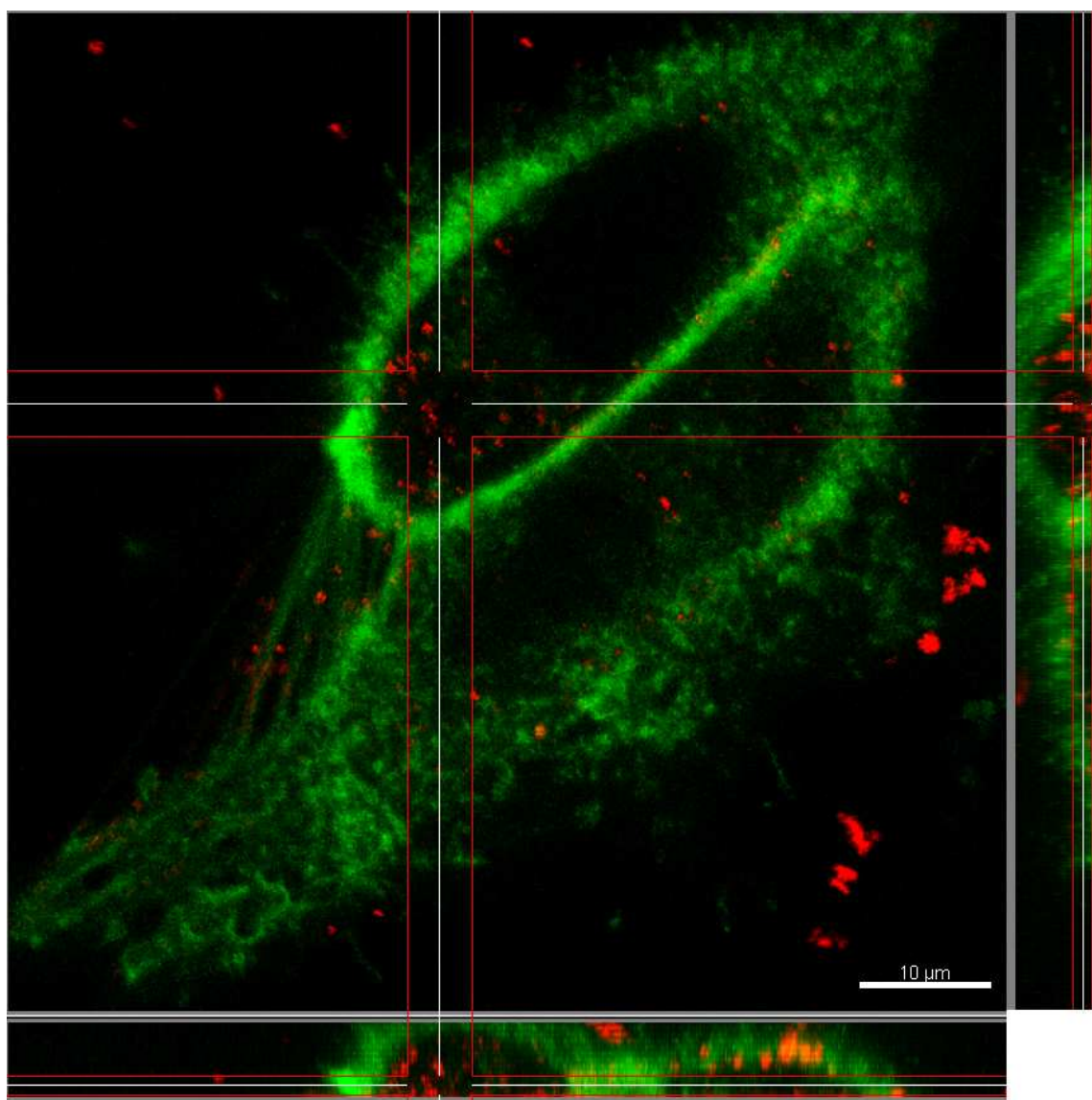
**Figure S3.** High-resolution XPS of Au4f, S2p and S2s spectral regions; AuNPs (left panels) and AuNP-C-SAP (right panels).

HR-TEM



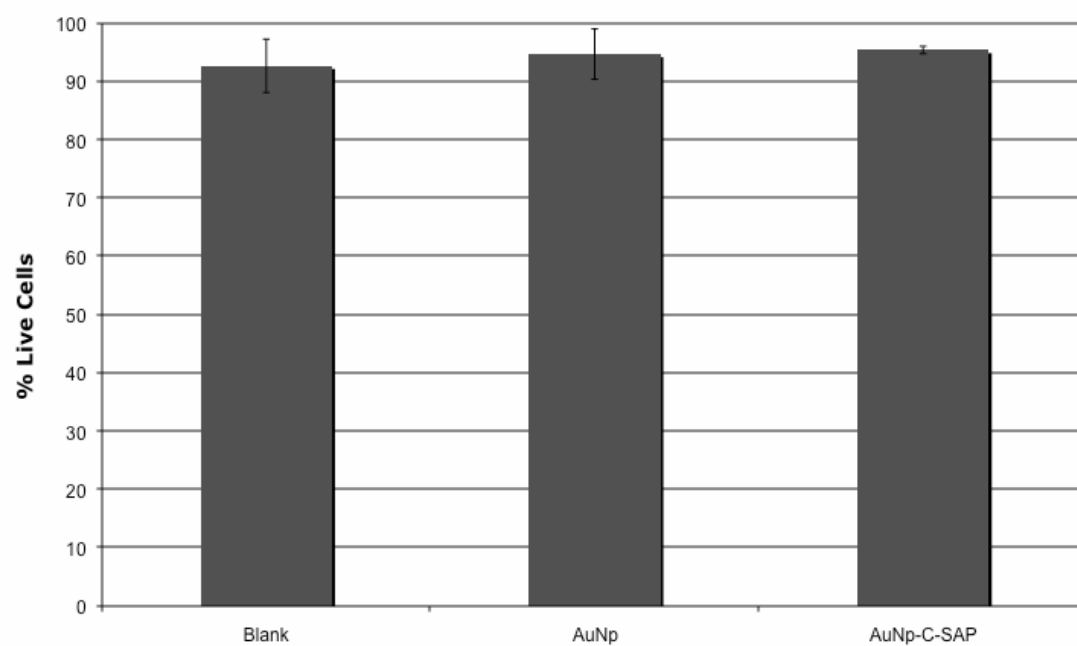
**Figure S4.** HR-TEM image of AuNp (x 500 000).

## Confocal Laser Scanning Microscopy



**Figure S5.** CLSM image of HeLa cells incubated with AuNp-C-SAP; the red signal corresponds to light reflected by gold nanoparticles and the green signal to the fluorescence from OregonGreen-WGA (cell-membrane label).

## Flow Cytometry



**Figure S6.** Cell viability after 24h incubation with AuNp or AuNp-C-SAP solution at 0.3 nM (expressed as the % of cells not stained with propidium iodide).